

NACE SALARY SURVEY

COMING IN JANUARY!

Preview the NEW Salary Survey

Featuring:

- Employer-reported data.
- Actual salaries—not offers.
- More data for all majors—including liberal arts.
- More occupational positions.



National Association of Colleges and Employers | www.naceweb.org

Watch for the NEW Salary Survey,

Featuring actual starting salary data derived from government and other sources, the new report gives you salary information for approximately 60 disciplines, plus data broken out by industry and occupation. You'll have access to more-robust data for new college graduates in *all* disciplines.

Salary Survey data are provided through a partnership with Job Search Intelligence. Reports are published in January, April, and September.



WHO'S HIRING WHICH MAJORS?

You'll see where specific majors land, plus get the going rate for grads with that major in that industry.

TOP INDUSTRIES | INDIVIDUAL MAJORS

Industry	New Grad Entrants	Average Salary
English		
Elementary and Secondary Schools	3,900	\$36,200
Restaurants and Other Food Services	2,900	\$23,700
Publishing, except Newspapers and Software	1,600	\$29,100
Political Science		
Legal Services	3,800	\$36,100
Elementary and Secondary Schools	3,600	\$37,700
Executive Offices and Legislative Bodies	1,800	\$32,300
Psychology		
Elementary and Secondary Schools	4,400	\$35,400
Individual and Family Services	3,100	\$30,400
Hospitals	2,700	\$32,700
Biology		
Colleges and Universities, including Junior Colleges	4,000	\$39,200
Scientific Research and Development Services	2,400	\$36,900
Hospitals	2,300	\$38,300

coming in January!

DATA BY MAJOR—EVEN FOR LIBERAL ARTS!

Get current, actual starting salary information for graduates in approximately 60 majors at the bachelor’s level—including business, engineering, healthcare, and tech-related disciplines, PLUS robust data for liberal arts and other fields where salary information has historically been scarce. You get the average, plus ranges.

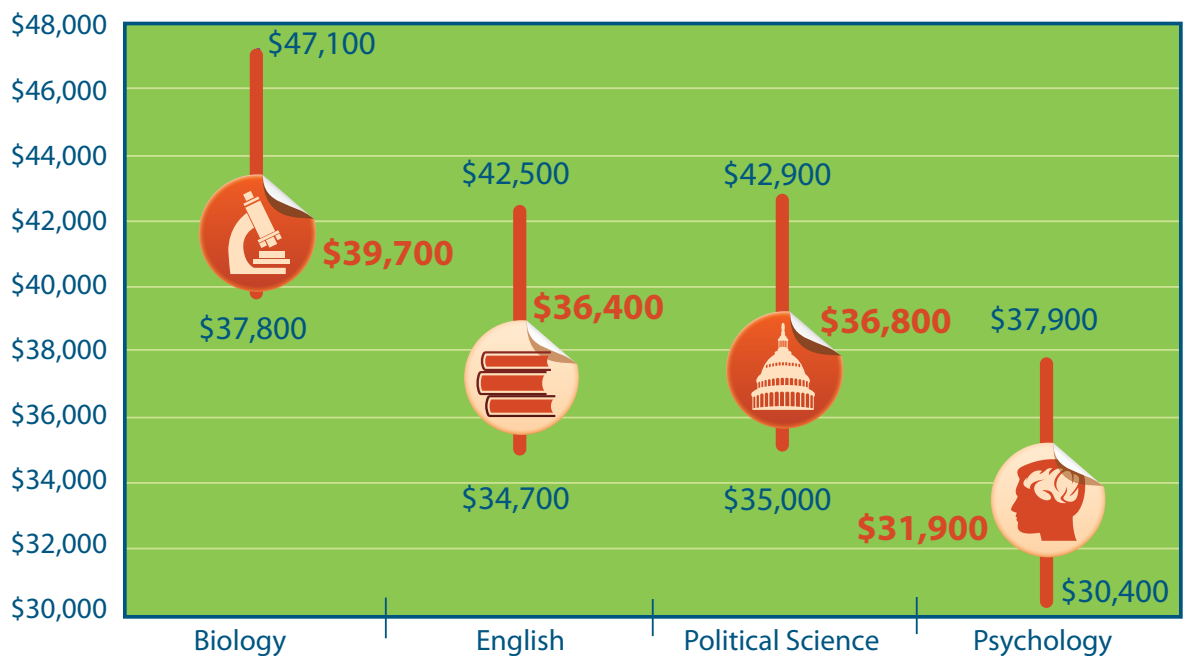
STARTING SALARY BY ACADEMIC MAJOR | BACHELOR’S DEGREES

Academic Major	Average Starting Salary		Percent Change in Starting Salaries	25th Percentile	50th Percentile	75th Percentile
	2011	2010				
Biology	\$39,700	\$38,800	2.3%	\$37,800	\$38,600	\$47,100
English	\$36,400	\$36,000	1.1	\$34,700	\$35,500	\$42,500
Political Science	\$36,800	\$36,100	1.9	\$35,000	\$35,800	\$42,900
Psychology	\$31,900	\$31,300	1.9	\$30,400	\$31,000	\$37,900

SEE SALARY TRENDS AT A GLANCE!

Get at-a-glance insight into what’s really the going rate! Each issue will depict the high, low, and average salary for selected majors.

SALARY RANGES | HIGH, LOW, AVERAGE



WHAT DOES THIS JOB PAY—FOR THIS MAJOR?

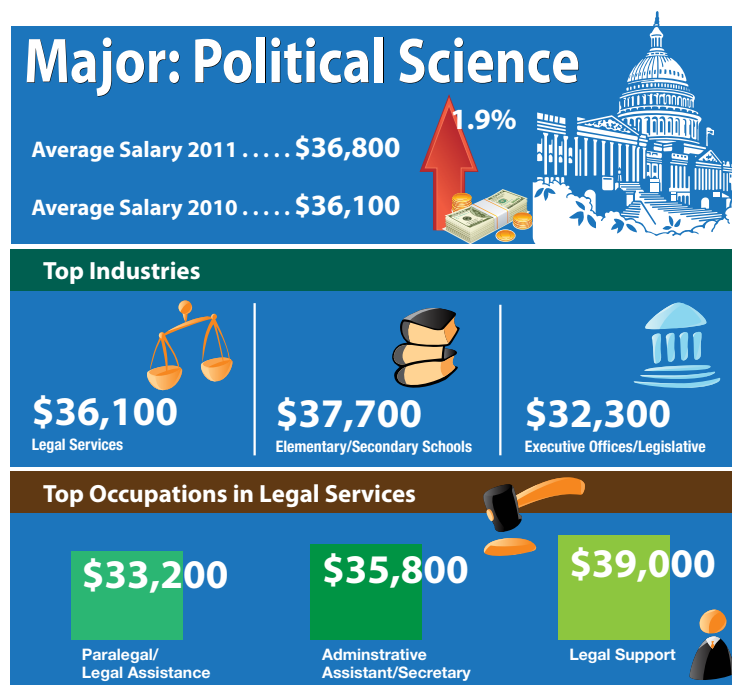
Get salary data by major for specific occupations, within specific industries, and identify top jobs for specific majors!

OCCUPATIONAL POSITION BY MAJOR | **INDUSTRY**

Political Science		
Legal Services	New Grad Entrants	Average Salary
Paralegal or Legal Assistant	500	\$33,200
Administrative Assistant or Secretary	1,100	\$35,800
Legal Support Worker	700	\$39,000
Office and Administrative Support Worker	400	\$35,700

GET AT-A-GLANCE INFO FOR SELECTED MAJORS!

Easy-to-read infographics spotlight salary for selected majors.



GET SPECIALIZED SALARY DATA

Get salary data for new college graduates customized to your specifications. NACE can provide you with a custom research report based on major plus geographic region, gender, race/ethnicity, and more. **Contact Andrea Koncz, akoncz@naceweb.org, 800.544.5272, ext. 121.**

Looking for salary by position? By experience level? By skill set? Use the NACE Salary Calculator! www.naceweb.org/salary_calculator/